

# 6L FVS Series Long Twin Tube Fluorescent Luminaires

- Cl. I, Div. 2, Groups B, C, D
- Cl. I, Zone 1, Groups IIC (Suffix S813)
- Cl. II, Div 1, Groups E, F, G (Suffix S813)
- Cl. II, Div 2, Groups F,G
- Cl. III, Simultaneous Presence
- Marine & Wet Locations
- 3,3R, 4,4X; IP66

## Application:

FVS compact fluorescent luminaires are used:

- where low mounting heights or limited mounting room exists.
- for task oriented lighting.
- where a cool, efficient light source is required.
- in areas that require lamps to reach full illumination immediately.
- in industrial and chemical processing.
- in pulp and paper facilities.
- in waste or sewage treatment facilities.
- in non-hazardous commercial and industrial areas.
- in food and pharmaceutical plants where a non-glass lens is required.
- where fluorescent lighting has been preferred, but unavailable due to limited space and practicality.

## Features:

- Compact, lightweight, low profile design is ideal for confined areas and tight corners.
- Reaches full illumination immediately and delivers light output equivalent to fixtures twice its size.
- Fast-Latch™ closure provides quick and easy access for relamping and maintenance – no tools necessary.
- Silicone sealing gasket provides exceptional watertight and dust-tight bond, providing excellent performance in wet and corrosive environments.
- Power disconnect switch (Cooper Crouse-Hinds ESWP) automatically cuts power to the lamps and ballast when the lens is opened.
- Shatter-resistant polymeric lens (.125 thick) provides environmental and corrosion protection.
- Available in 120, 277, 220/240 and 347 50/60hz voltages.
- 2 lamp fixture, uses single-ended 40 watt lamps.
- Multiple mounting capability.
- Energy saving electronic ballast is standard.

## Standard Materials:

- Corrosion-resistant die cast copper-free aluminum housing.
- Shatter-resistant nylon lens.
- Polycarbonate lens (suffix-S813)
- Silicone rubber gasket.
- Extruded aluminum hinges and closure hardware with stainless steel pivots.

## Standard Finishes:

- Epoxy powder coated housing.
- Anodized hinges and closure hardware.
- Highly specular aluminum reflector.

## Size Ranges:

- All luminaires are 24"L x 12"W x 3.12"H.
- Conduit entrances are 3/4".

## Electrical Ratings:

- 120-277V, 50-60 Hz
- 347V, 60Hz
- Two 40 watt long twin tube lamps



## Certifications and Compliances:

- NEC and CEC:
  - Class I, Division 2, Groups B,C,D
  - Class I, Zone 1 Group IIC (suffix S813)
  - Class II, Division 1, Groups E, F, G (Suffix S813)
  - Class II Division 2 Groups F, G
  - Class III & Simultaneous Presence (Cl. I and Cl. II)

### Note: Aiming Limitations

Cl. II, Cl. III & Simultaneous Presence  
Aim down to Horizontal  
Cannot aim up

- UL Standards
  - 844 Hazardous (Classified) Locations
  - 1598 Luminaires
  - 1598A Marine Locations
- CSA Standards
  - C22.2 No. 137

## Options:

- | Description   | Suffix to be added to Cat. No. |
|---|--------------------------------|
| • Fused to protect ballast under abnormal line conditions. Not available on CSA certified fixtures. | S658*                          |
| • Fixture supplied with two F40BX/SPX35 lamps   | S714                           |
| • Corro-free™ epoxy finish inside and out   | S753                           |
| • Class I, Zone 1, Group IIC and Class II, Div. 1, Groups E, F, G suitability.                      | S813                           |
| • Tamperproof . . . consult Cooper Crouse-Hinds   |                                |

## Temperature Performance Data:

Style	Ambient Temp °C	Class I		Class II	Simultaneous Presence Limitations	Supply Wire	Minimum Operating Temperature
		Div. 2	Zone I	See Aiming			
All	40°C	T3C	T3	T6	T3C/T6	75°C	-18°C (0°F)
All	55°C	T3C	—	—	—	75°C	-18°C (0°F)

## Luminaire Weight (lbs.) without lamps

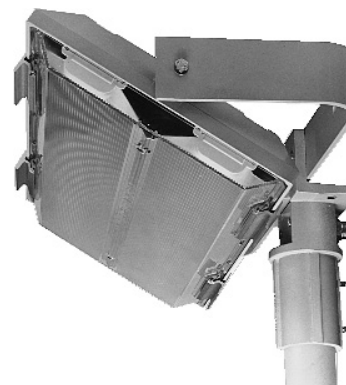
- Standard 2 lamp FVS . . . . . 12.0

\* When ordering Fuses for luminaires, option S658, you must specify the operating voltage. S658 can not be ordered with /MT in the catalog number.

## Accessories

### FVS Trunnion Mount Kit (FVS-K5)

- Permits vertical mounting of luminaire on a beam when used with a standard beam clamp.
- Can be mounted directly to a wall or ceiling.
- Can be pole mounted when used in conjunction with a SFA6 slipfitter adapter (ordered separately).
- Constructed from copper-free aluminum.
- Supplied with a CGB cord connector.



FVS with Trunnion Arm and Slipfitter

# FVS Series Long Twin Tube Fluorescent Luminaires

- Cl. I, Div 2, Groups B,C,D
- Cl. I, Zone 1 Group IIC (suffix S813)
- Cl. II, Div 1, Groups E,F,G (suffix S813)
- Cl. II, Div 2, groups F,G
- Cl. III, Simultaneous Presence

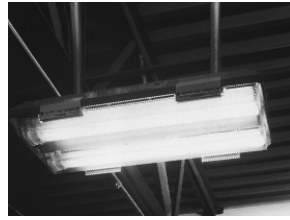
- Marine & Wet Locations
- 3,3R, 4,4X; IP66

**6L**

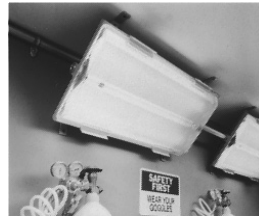
**Luminaire includes all necessary provisions for these installations:**



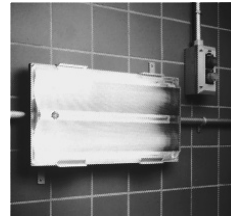
Ceiling Mount



Pendant Mount



Corner Mount



Horizontal Wall Mount



Vertical Wall Mount

**FVS compact fluorescent (2 lamp luminaire):**

Voltage	Wattage/ Lamp	Hub Size (4)	Cat. Number	Cat. # with Class I, Zone 1 and Class II, Div. 1 Suitability
120 (50 or 60 Hz)	40	3/4"	FVS20	FVS20-S813
277 (50 or 60 Hz)	40	3/4"	FVS27	FVS27-S813
120-277 (50 or 60 Hz)	40	3/4"	FVS20UNV	FVS20UNV-S813
347 (50 or 60 Hz)	40	3/4"	FVS23	FVS23-S813

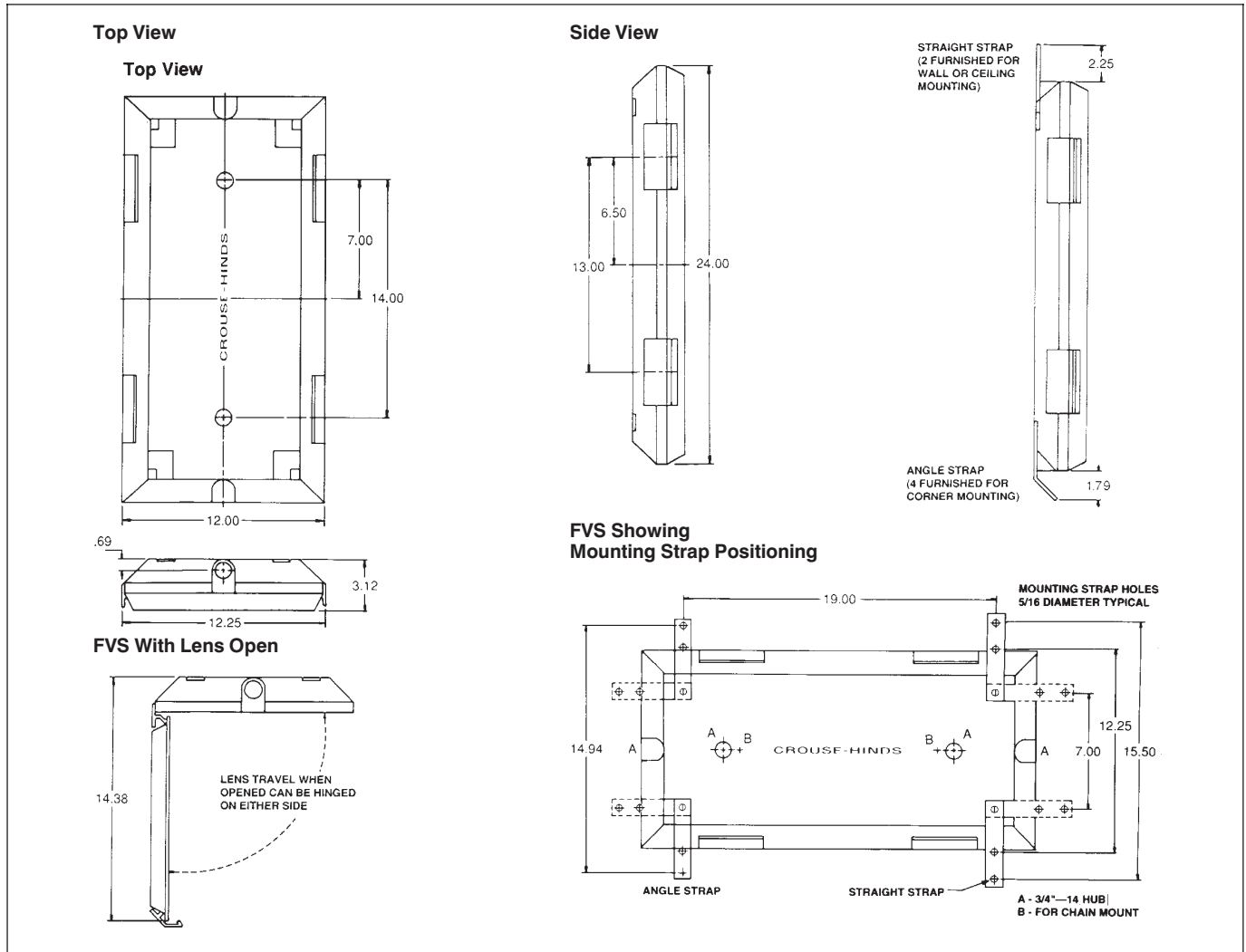
## Accessories Separately

## Ordered

- Trunnion arm kit ..... FVS-K5
- Slipfitter adapter to be used with trunnion arm ..... SFA6

## Dimensions:

FVS with Trunnion Arm: 26 1/4" x 13.5"W x 3.12"H



6L Fluorescents